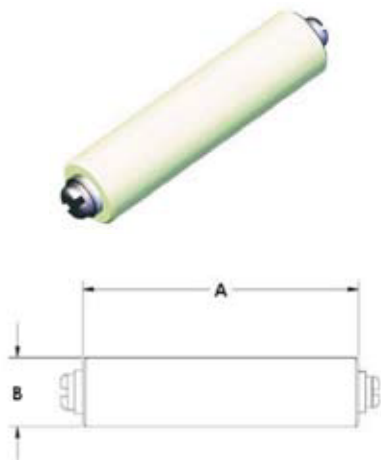
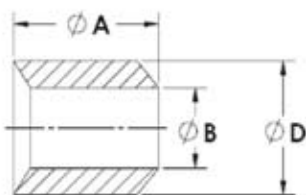


Ceramic Standoff, Steatite, Female



DC (KV) AIR	DC (KV) VAC UUM	THREAD SIZE	A	B	PART #
3	7	6/32	.38	.38	A1625-1-C
4	10	6/32	.50	.38	A1625-2-C
5	12	8/32	.63	.50	A1625-5-C
6	15	8/32	.75	.38	A1625-4-C
8	20	6/32	1.00	.38	A1625-3-C
8	20	8/32	1.00	.50	A1625-6-C
8	20	10/32	1.00	.75	A1625-8-C
10	25	1/4-20	1.25	1.00	A1625-10-C
14	35	8/32	2.00	.50	A1625-7-C
14	35	10/32	2.00	.75	A1625-9-C
16	40	1/4-20	2.5	1.00	A1625-11-C

Ceramic Beads, Alumina



A	D	B	ACCEPTS WIRE	PART #
.110	.100	.053	.045	A1429-1-C
.185	.183	.087	.064	A1429-2-C
.170	.156	.068	.050	A1429-3-C
.260	.239	.107	.102	A1429-4-C
.260	.240	.144	.128	A1429-5-C
.400	.366	.146	.128	A1429-6-C

Ceramic Spacers, Alumina



PINS	DIAMETER	THICKNESS	ACCEPTS WIRE	PART #
4 & 10	.62	.135	.070	A0175-1-C
6	.62	.135	.070	A0175-2-C
20	1.25	.125	.070	A0207-1-C
35	1.25	.125	.070	A0735-1-C