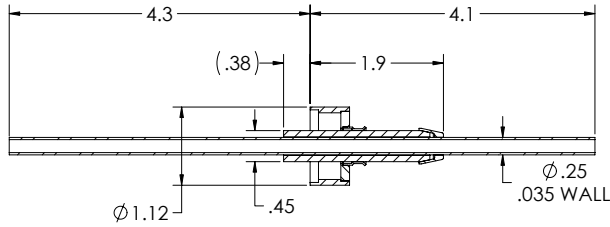
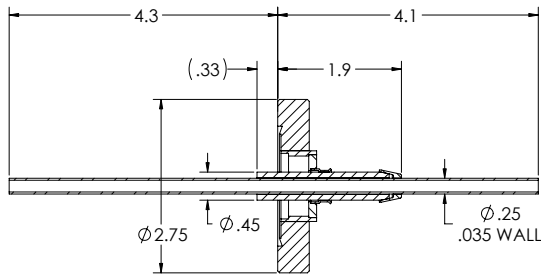


RF — 8 KV / 10 KW / 1 Conductor
WELDABLE



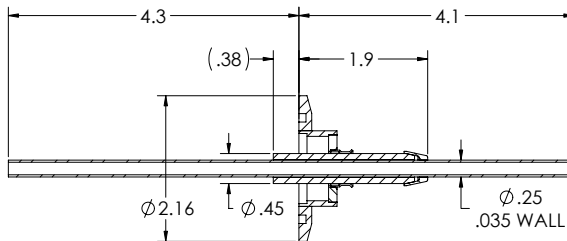
PART #
 A0561-1-W

CONF L AT F LANGE



PART #
 A0563-1-

QUICK F LANGE

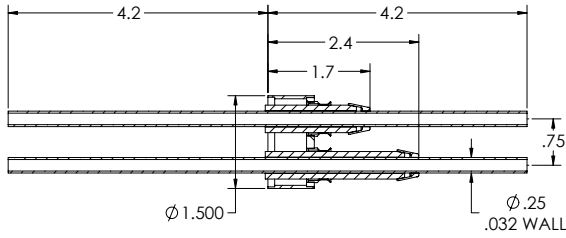


PART #
 A0564-1-QF

See Section 7 for connectors, wiring, and other accessories.

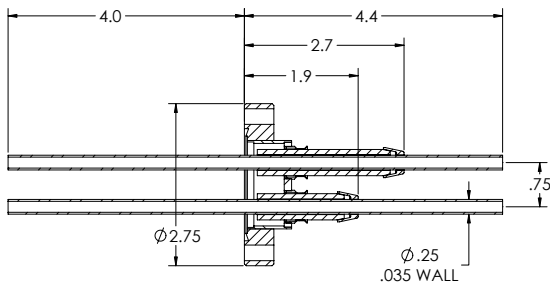


RF — 8 KV / 10 KW / 2 Conductors
WELDABLE



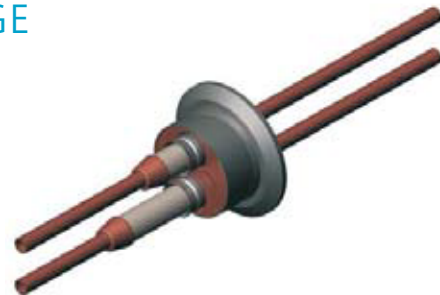
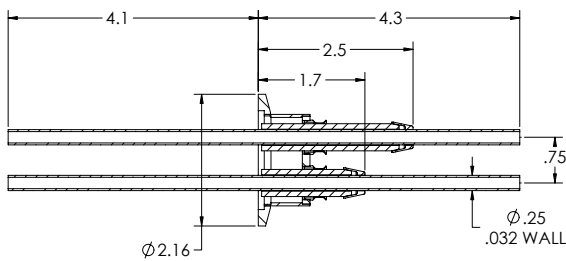
PART #
A0553-1-W

CONFLAT FLANGE



PART #
A0559-1-CF

QUICK FLANGE



PART #
A0565-1-QF

See Section 7 for connectors, wiring, and other accessories.

